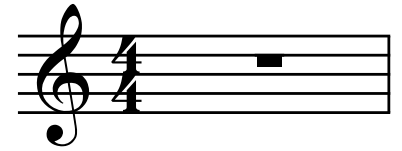


Yesterday

Paul McCartney
of the "Beatles"



A

C B m E7 A m

1 Yest - er - day, all my trou - bles seemed so far a - way
Sud - den - ly, I'm not half the man I used to be
Yest - er - day love was such an ea - sy game to play

F G7 C A m D7 F C

4 Now it looks as tho they're here to stay, Oh, I be-lieve in Yest - er-day
There's a sha-dow hang - ing o - ver me Oh, Yest - er-day came sud - denly
Now I need a place to hide a-way, Oh I be-lieve in Yest - er-day

B

B m7 E7 A m G F E m D m G7 C

8 Why she had to go I don't know, she would - n't say

B m7 E7 A m G F E m D m G7 C

12 I said some - thing wrong now I long for Yest - er - day

A m D7 F C

16 m m m m m m m *fine*